

SVC: superior vena cava



Ao: Aorta

PA: pulmonary artery

left pulmonary veins

right pulmonary veins

PV: pulmonary valve



RA: right atrium

MV: mitral valve

AV: aortic valve

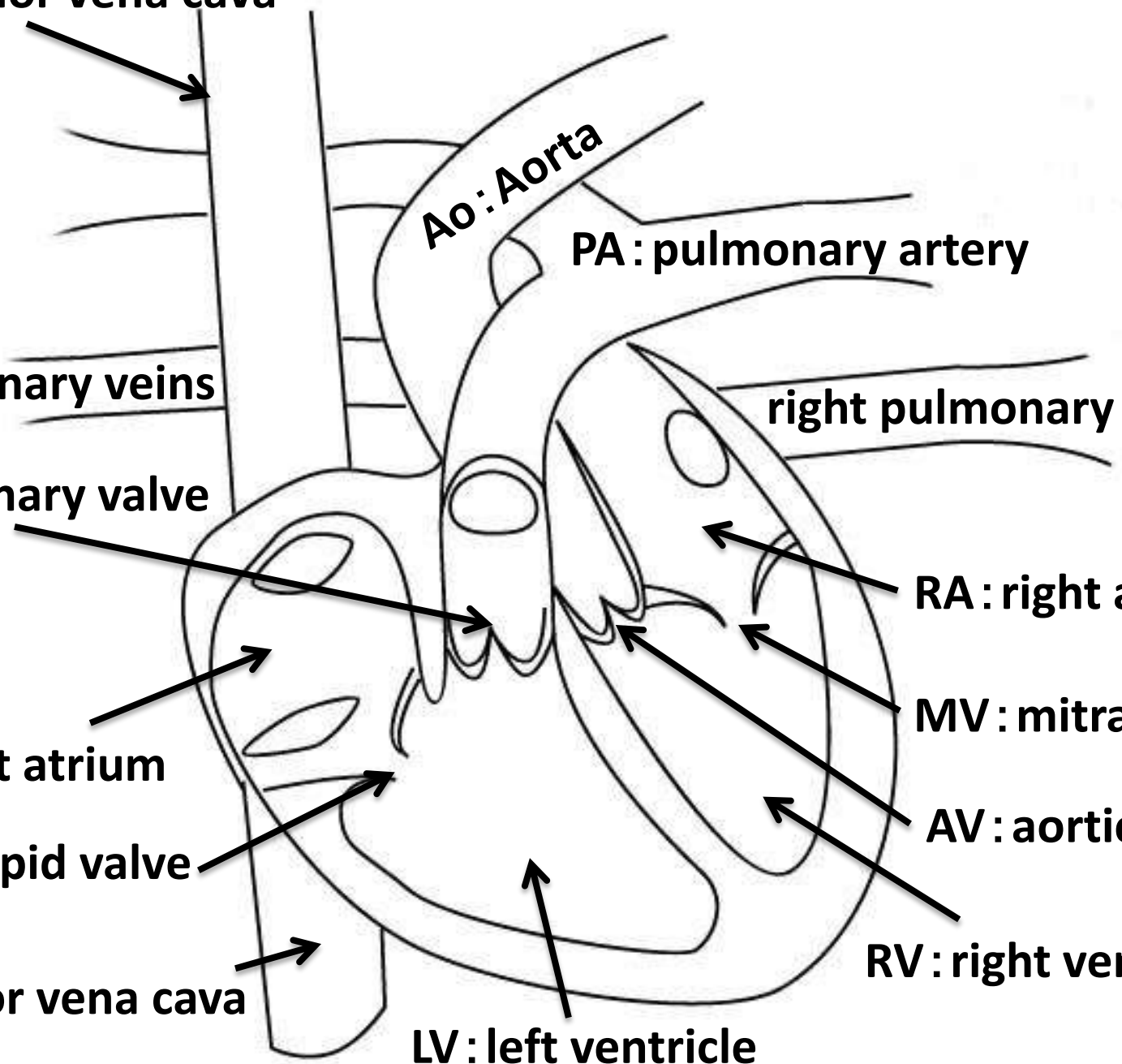
RV: right ventricle

LA: left atrium

TV: tricuspid valve

LV: left ventricle

IVC: Inferior vena cava



right ventricle

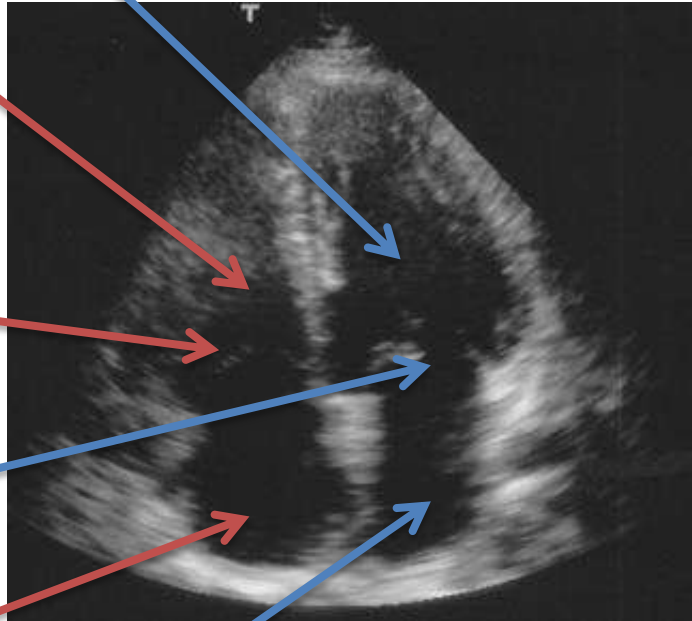
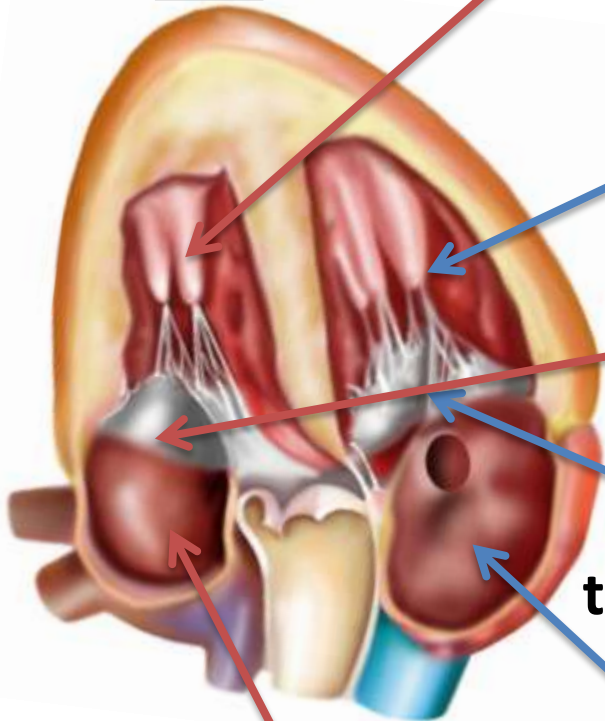
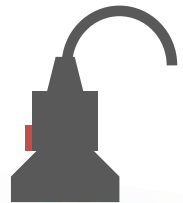
left ventricle

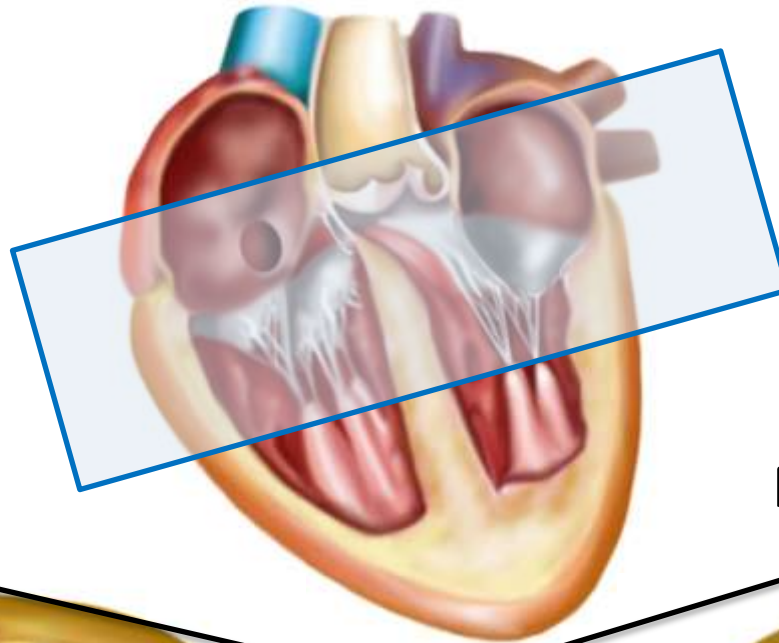
mitral valve

tricuspid valve

right atrium

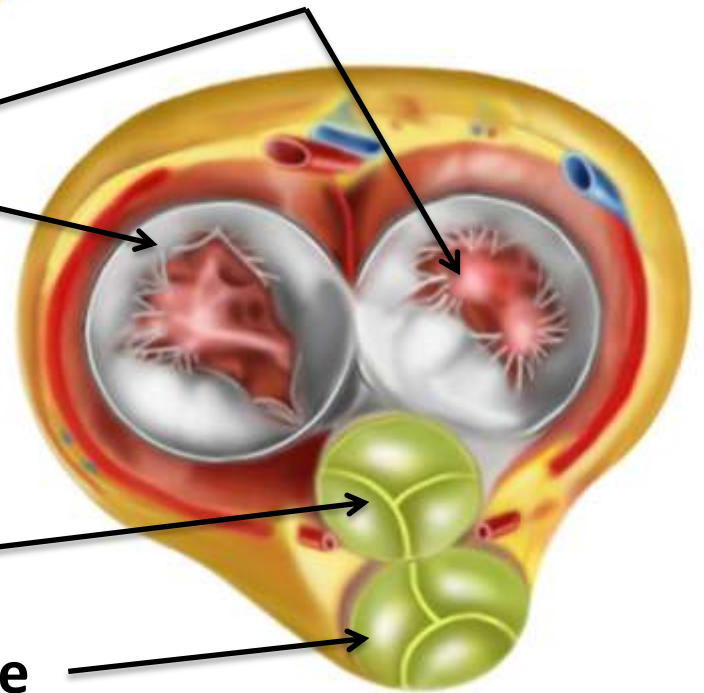
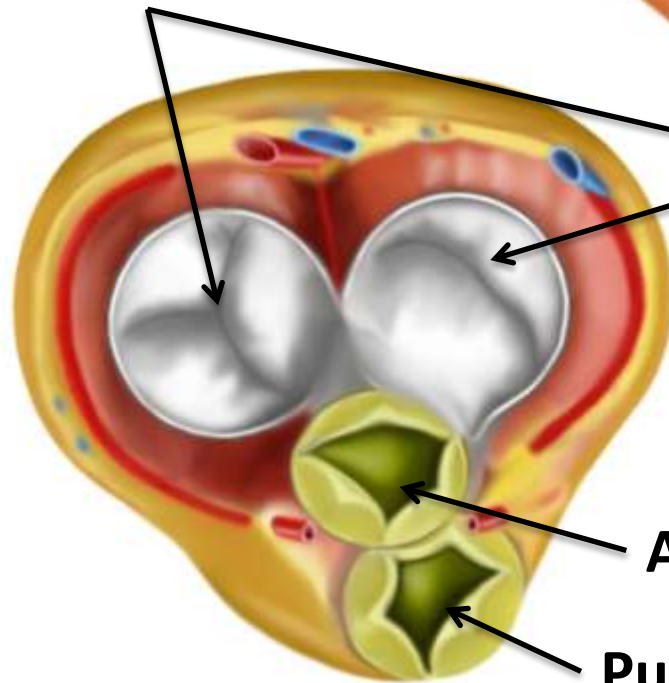
left atrium





Tricuspid valve

Mitral valve

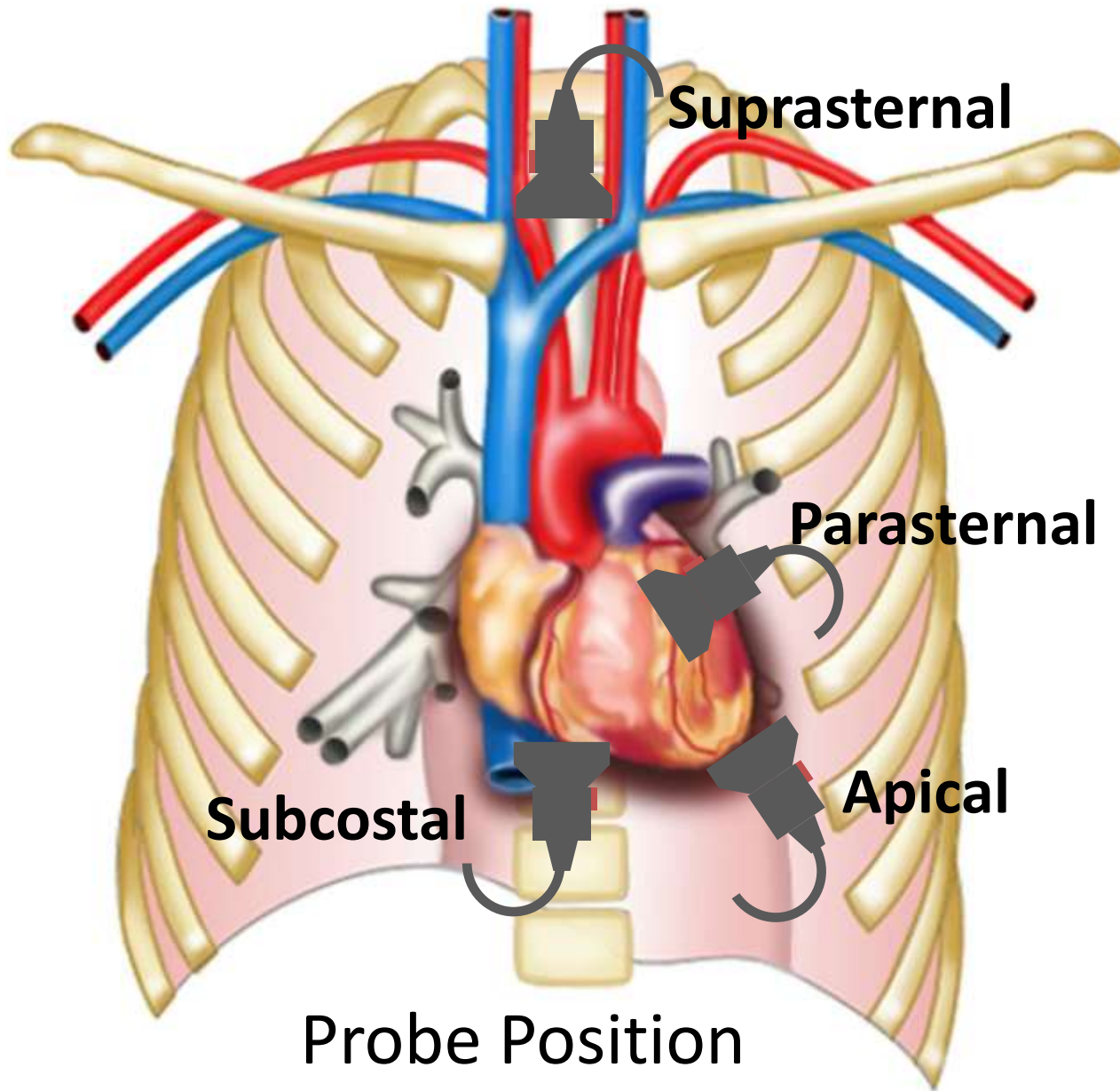


Aortic valve

Pulmonary valve

Systolic phase

Diastolic phase



Suprasternal

Parasternal

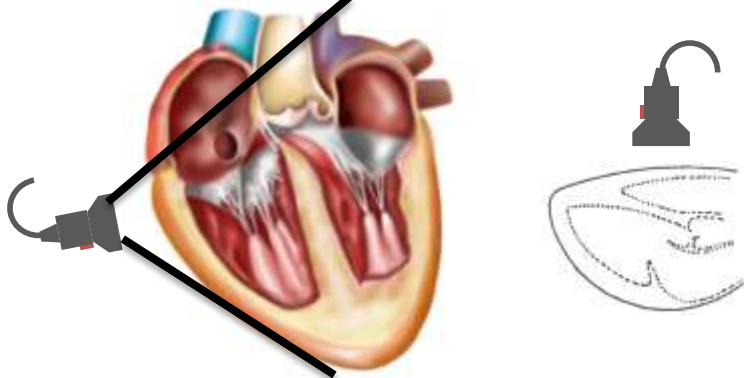
Subcostal

Apical

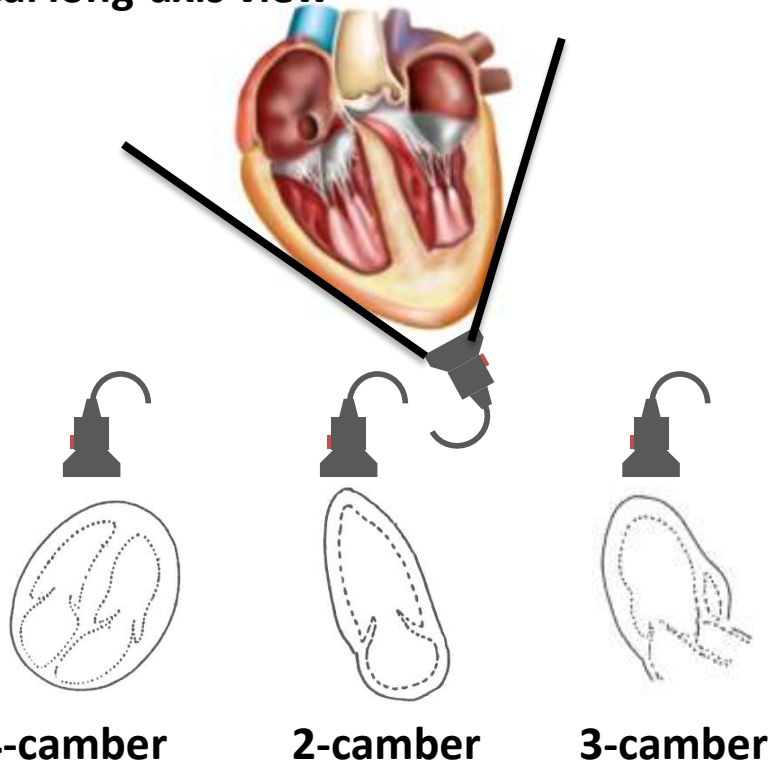
Probe Position

Long-axis view

Parasternal long-axis view

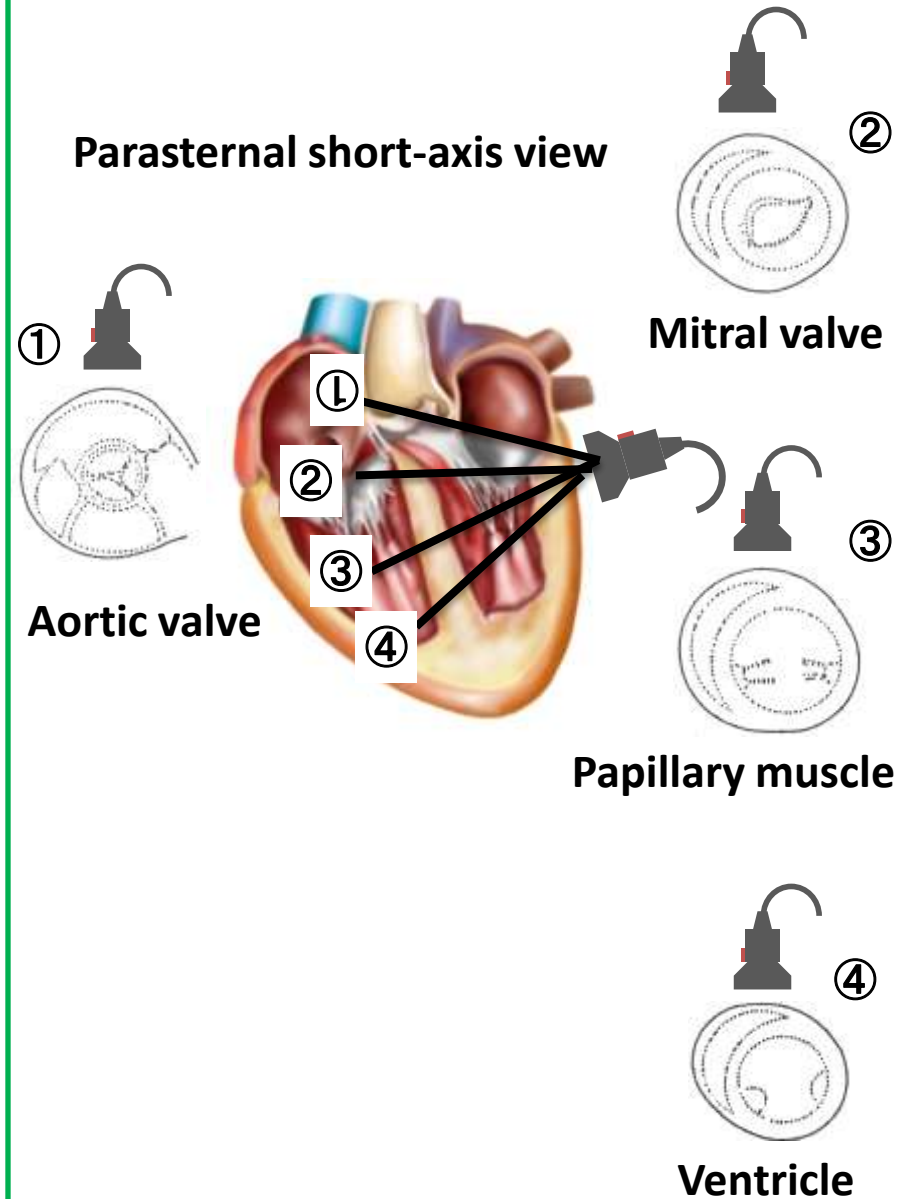


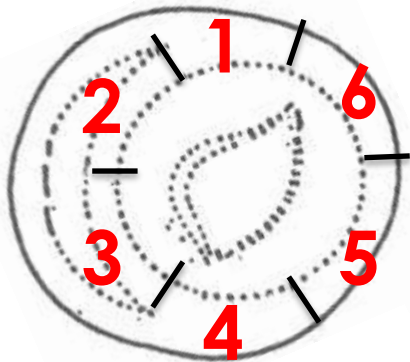
Apical long-axis view



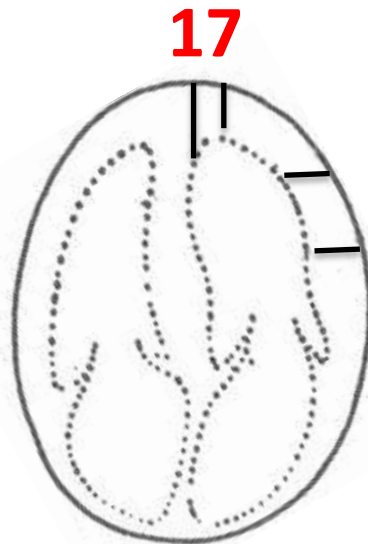
Short-axis view

Parasternal short-axis view

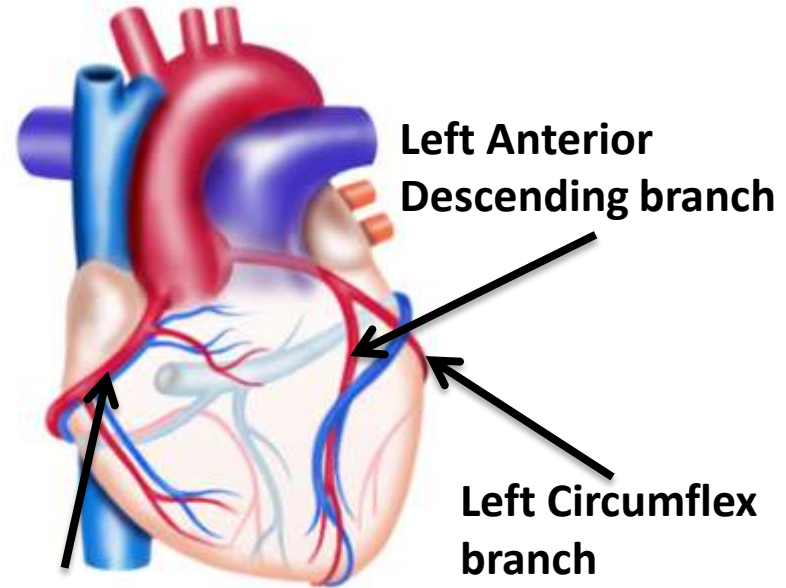




Mitral Valve



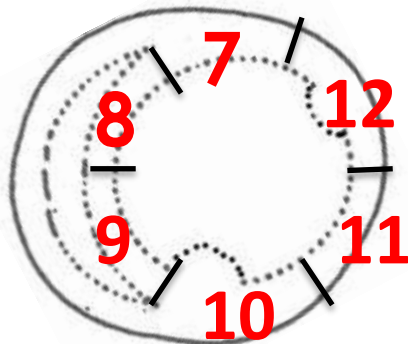
4-camber



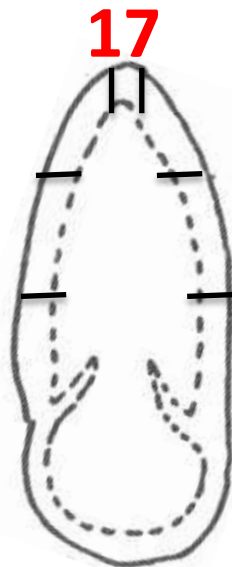
Right Coronary Artery

Left Anterior Descending branch

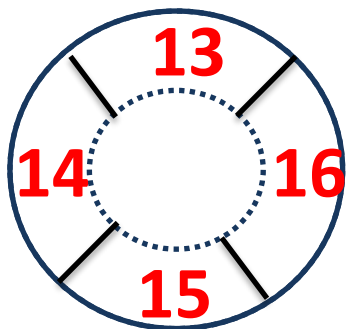
Left Circumflex branch



Ventricle



2-camber



Apex

Left Anterior Descending branch region
1,2,7,8,13,14,17

Left Circumflex branch region
5,6,11,12,16

Right Coronary Artery region
3,4,9,10,15